

ALSHOR Components

LEGS

Length (mm)	Weight (Kg)	Product Code
4000	19.6	380190
3000	14.7	380180
2000	9.6	380170
1500	7.3	380160
1250	5.2	380150



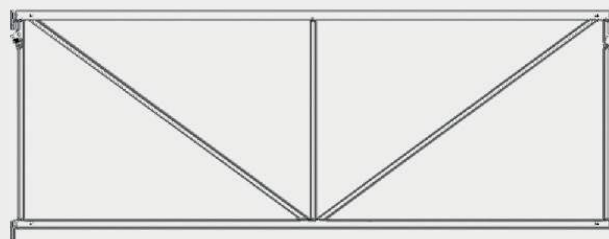
JACK

Length (mm)	Weight (Kg)	Product Code
200-1250	9.8	380090
125-750	14.9	380140



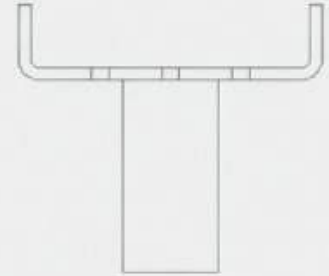
BRACING FRAMES/ GATES

Length (m)	Weight (Kg)	Product Code
3	16.9	380230
2.4	14.5	380220
1.8	12.2	380210
1.2	8.4	380200



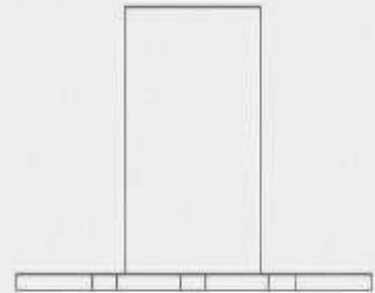
U-HEAD

Length (mm)	Weight (Kg)	Product Code
240 x 220 x 10	6.6	380110
270 x 220 x 6	4	380130



BASE PLATE

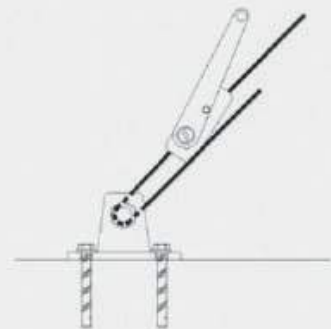
Description	Weight (Kg)	Product Code
Base Plate	3.5	380080



RATCHET LASHING

Description	Weight (Kg)	Product Code
Ratchet Set	7.8	380450

Provides horizontal restraint to the falsework where permanent structures do not provide support.



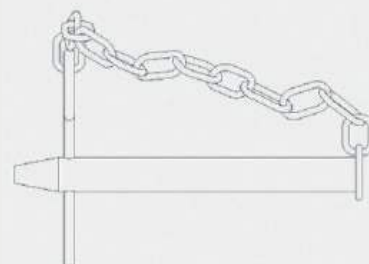
JACK SPANNER

Description	Weight (Kg)	Product Code
Alshor Spanner	14.9	380090
Adjusts the Jack, minimising the risk of damage to the equipment.		



STRAIGHT PIN

Description	Weight (Kg)	Product Code
Straight Pin	0.01	380120
Secure components when lifting tables.		



PRIMARY BEAM BOLT

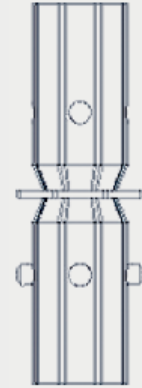
Description)	Weight (Kg)	Product Code
Primary Beam Bolt	0.19	110916
Secure Primary Beams to U-Heads.		



SPIGOT

Description	Weight (Kg)	Product Code
6 mm	2.5	380100

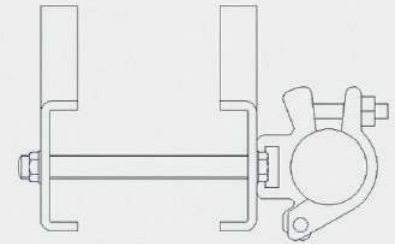
Used to connect leg to leg.



POCKET TUBE COUPLER

Description	Weight (Kg)	Product Code
Pocket Coupler	2.6	380385

Connects scaffolding tubes to the Alshor leg.



HANDRAIL

Length (mm)	Weight (Kg)	Product Code
3000	5.9	380310
2400	4.8	380300
1800	4.1	380290
1200	3.2	380280

Handrails locate into the lug extrusions with integral spring latches to provide guardrails when access is required below soffit level.

